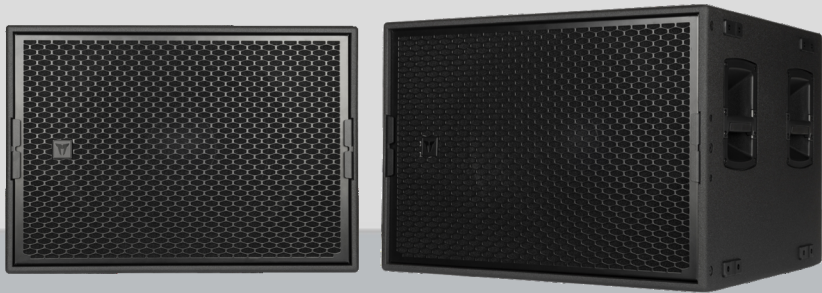




# GTS 19G

HIGH-PERFORMANCE SUBWOOFER



**Description** The GTS 19G is a single 19" subwoofer module for the low-frequency extension in high-demanding touring and install applications, indoors and outdoors. Equipped with one high-excursion best-in-class transducer, it offers excellent reproduction quality and extreme sound pressure. The cabinet is provided with P-COM power connections on back panels

- Features**
- › 140 dB max SPL
  - › 19" neo woofer, 4" v.c.
  - › 2 side handles
  - › Designed to operate with XPS16K amplifier (8 modules per amp unit)
  - › Durable and lightweight cabinet construction, polyurea coating
  - › Heavy duty, powder coated, custom perforated front grille
  - › 3 P-COM 8 pole bayonet connectors (Gold coated, CA-COM compatible, IP68)

<b>Part Number</b>	13000862	GTS 19G	Black	EAN 8024530022082
--------------------	----------	---------	-------	-------------------



# GTS 19G

## HIGH-PERFORMANCE SUBWOOFER

Acoustical specifications	Frequency Response (-10dB)	28 Hz - 200 Hz
	Max SPL @ 1m	140 dB
Power section	Amplification	Full Range
	Nominal Impedance	8 ohm
Transducers	Woofer	1 x 19" neo, 4.0" v.c
Input/Output section	Input connectors	P-COM 8POLE
	Output connectors	P-COM 8POLE
Standard compliance	Safety agency	CE compliant
Physical specifications	Cabinet/Case Material	Birch plywood
	Hardware	M20 Socket
	Handles	2 x side
	Pole mount/Cap	M20 thread
	Grille	Steel with clothing
	Color	Black
Size / Weight	Height	531.5 mm / 20.93 inches
	Width	760 mm / 29.92 inches
	Depth	655 mm / 25.79 inches
	Weight	48.5 kg / 106.92 lbs

Line Art 2D

